



LANE & SMYTHE
REAL ESTATE BROKERS



3 CHISOLM, unit 302

\$1,200,000

listing agent, Eleanor Smythe



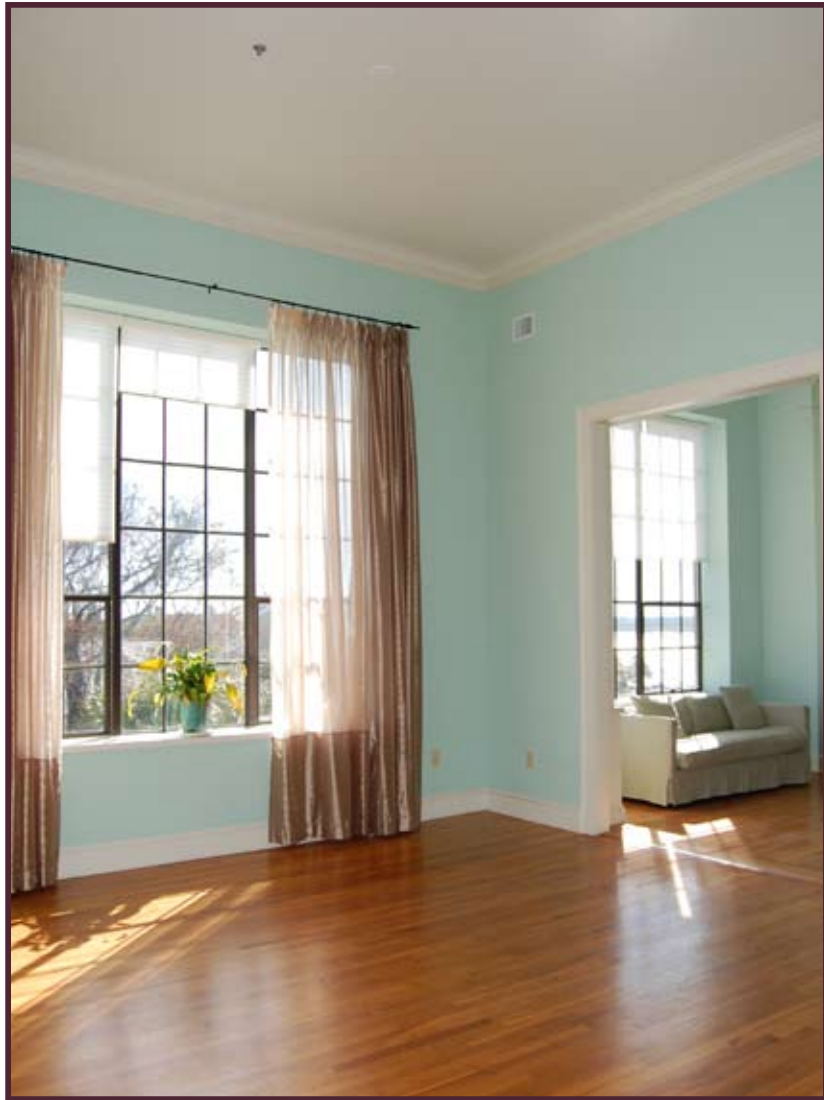
Tax Map #: 457-07-04-082
2007 Taxes: \$2960 (4%)
Approximate Square Footage: 1910
Approximate Year Built: 1923
Renovated in: 2004

3 chisolm, unit 302

Stylish south of Broad condominium located on the third floor of the recently renovated 1923 Neo-Classical style Murray Vocational School, now known as the Chisolm Street Condominiums. The apartment features 19-foot ceilings, hardwood floors, stainless steel appliances, a gas fireplace, and expansive views of Charleston's steeples, rooftops, and the Ashley River Bridge. Currently used as a one bedroom with a formal dining room, this space can be easily converted back to a two bedroom flat. Parking is available.

the following items convey:

- refrigerator
- gas range
- dishwasher
- microwave
- washer and dryer
- all interior electric shades
- ceiling fans



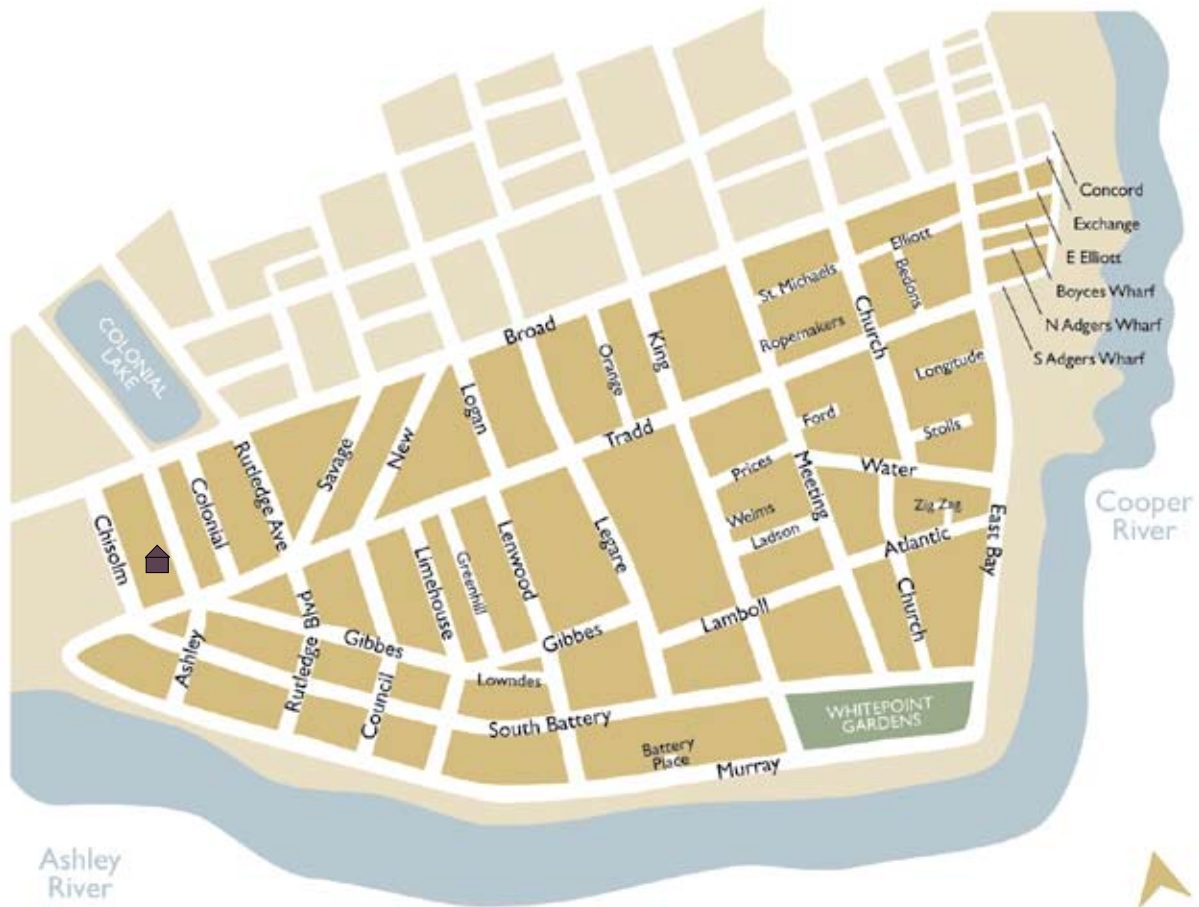












Ashley River



SOUTH OF BROAD

CHARLESTON · SOUTH CAROLINA

Map not to scale - for illustrative purposes only. © 2004 JP Design



Located on Charleston's premier business street, Nine Broad was built in the early 1850s as a cotton exchange office, designed by Edward Brickell White. In 1918, Preservationist Susan Pringle Frost, Charleston's first real estate broker, opened her office on Nine Broad Street. Three quarters of a century later, our firm, Lane & Smythe Real Estate, has continued her legacy, undertaking the restoration of Miss Frost's real estate office to its original architectural design.

For over twenty years we have been Charleston's leading real estate brokers, specializing in properties located in historic Charleston. We offer our clients the personal attention they deserve through our years of professional expertise, prominent advertising, and repeat business and referrals. Lane & Smythe successfully brings qualified buyers and sellers together... for those who call Charleston home.

The information herein is furnished to the best of our knowledge, but is subject to verification by purchaser, and agent assumes no responsibility for correctness thereof, nor warrants or guarantees the accuracy of the information or the condition of the property. This property is offered without respect to race, color, creed or national origin.